

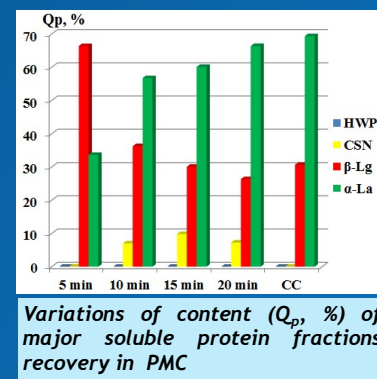
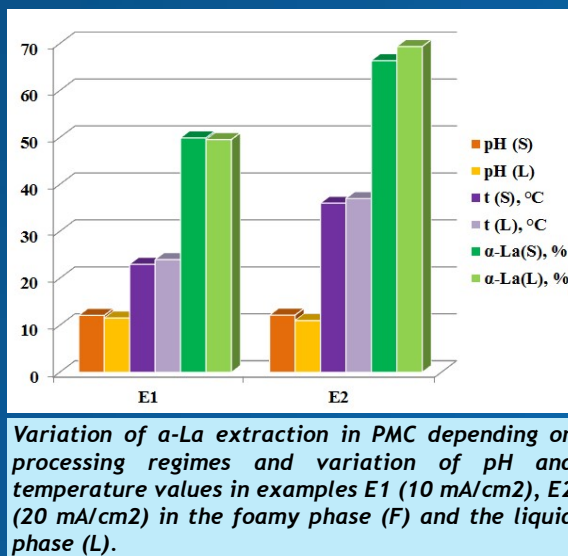
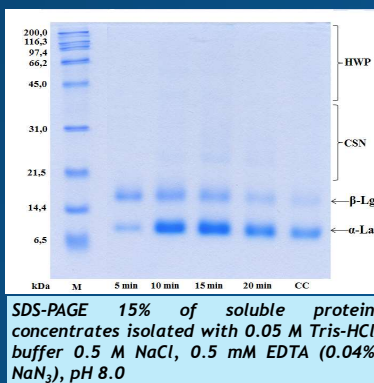
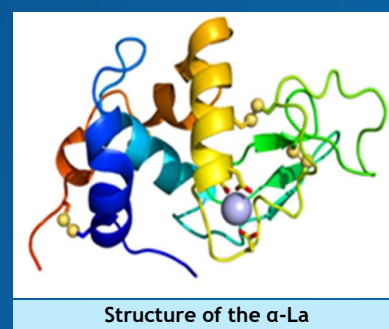
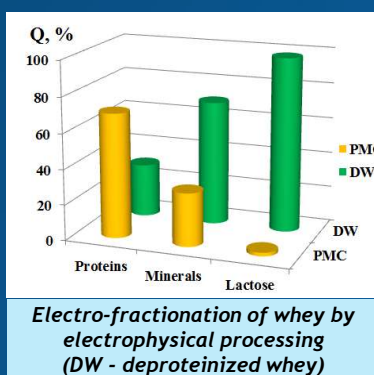
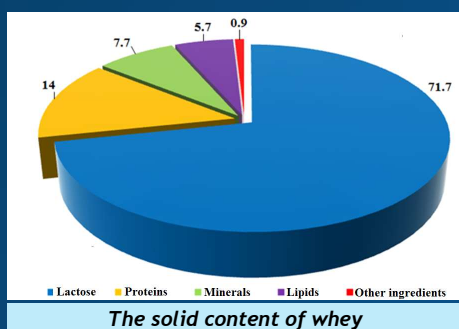
## Method of recovery of protein concentrates enriched with alpha-lactalbumin from whey

**Authors:** Vrabie Elvira, Sajin Tudor, Bologa Mircea, Paladii Irina, Vrabie Valeria, Stepurina Tatiana, Policarpov Albert, Gonciaruc Valeriu, Sprincean Catalina

**Positive decision no. 9795 from 2021.05.17.**

**Purpose:** The method of recovery of protein concentrates enriched with  $\alpha$ -La from whey can be used in dairy industry

**Advantages:** Wasteless processing of secondary dairy products with the extraction of mineral protein concentrates (PMC) and simultaneous isomerization of lactose in lactulose, which allows the recovery of proteins in PMC with predetermined protein content, especially with  $\alpha$ -La.



← Foamy phase

← Liquid phase